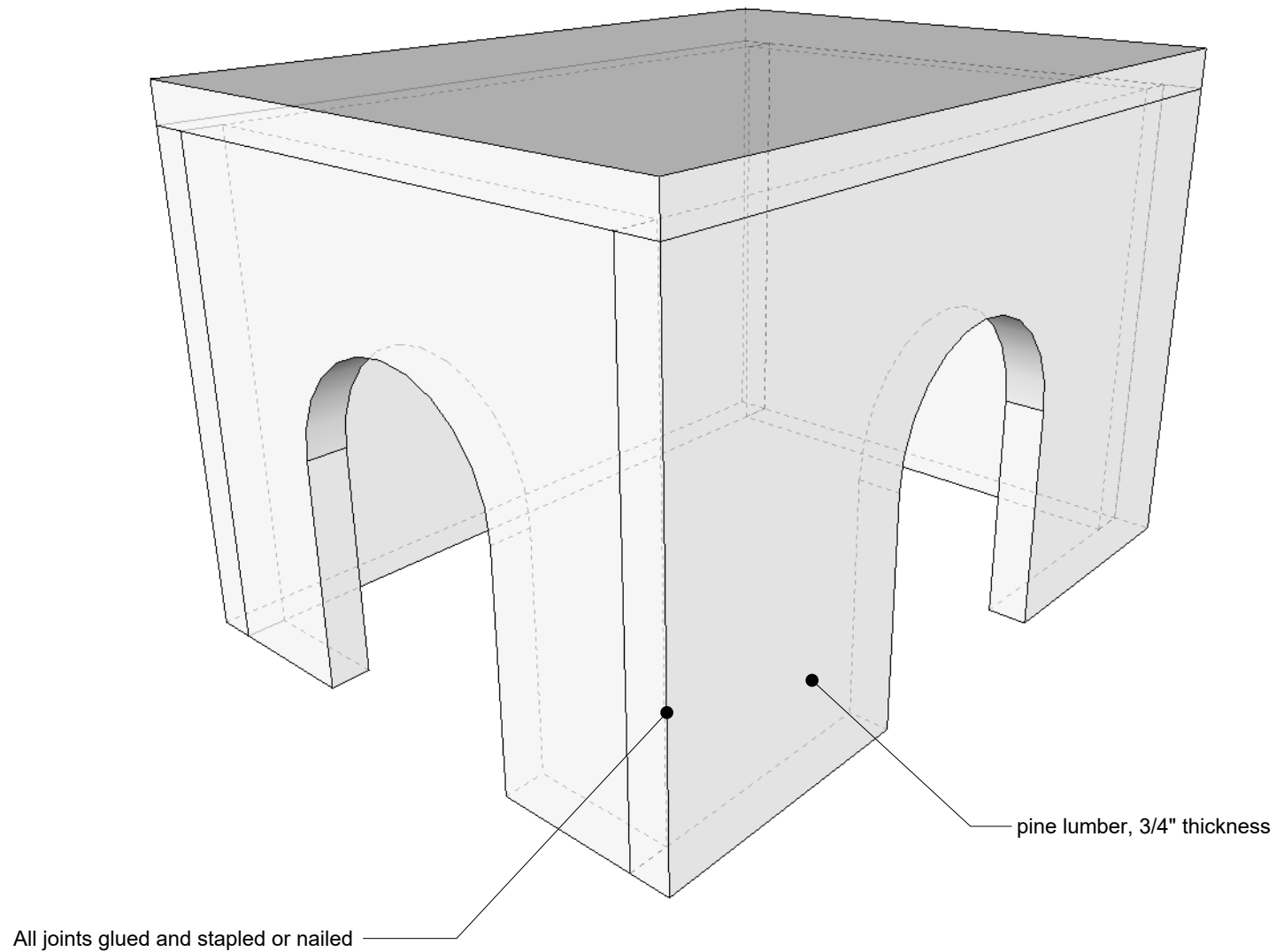


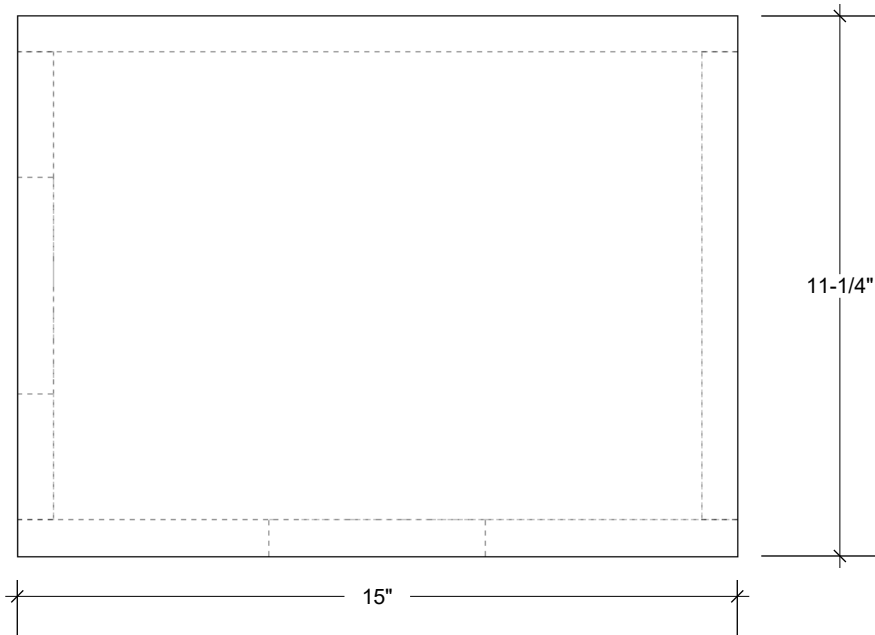
Wooden Hiding Huts for Shelter Rabbits (for 1-2 rabbits)

Supplies: unfinished pine lumber for safety (not manufactured wood, plywood, particle board, etc.), wood glue, nails or screws.

Time: 1 hour to cut the wood, fit together snugly, glue, dry, and sand each box.



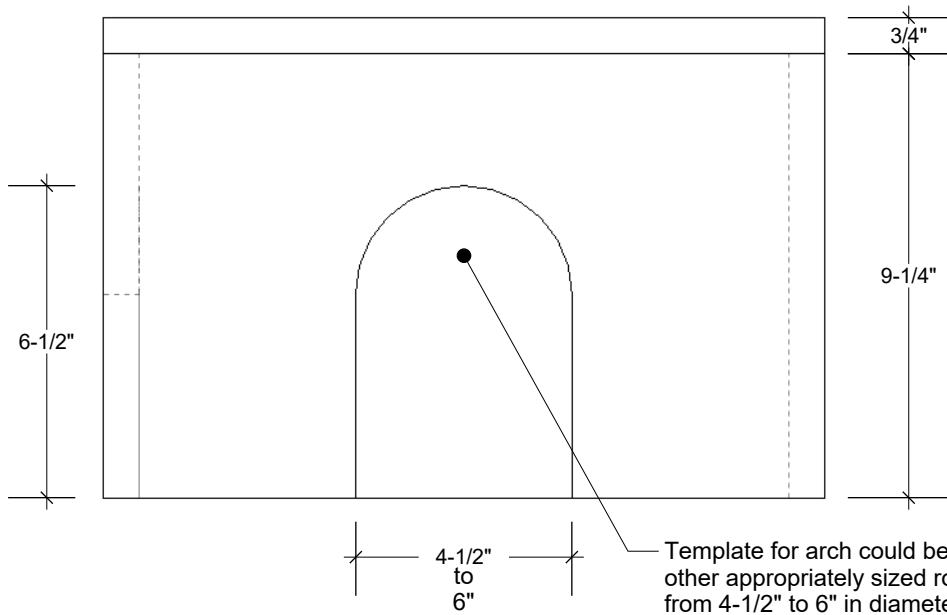
Plan View- Top



Plan View- Bottom

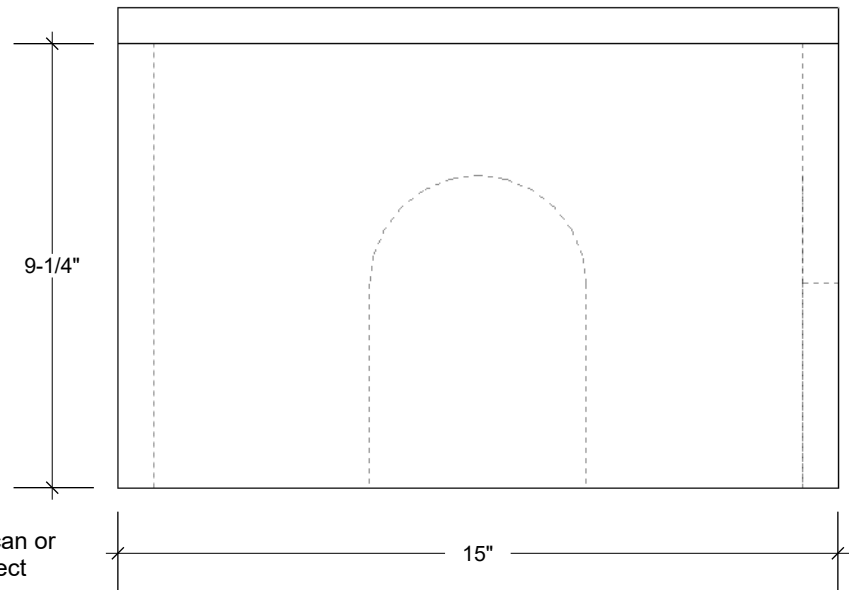


Elevation- Opening Side

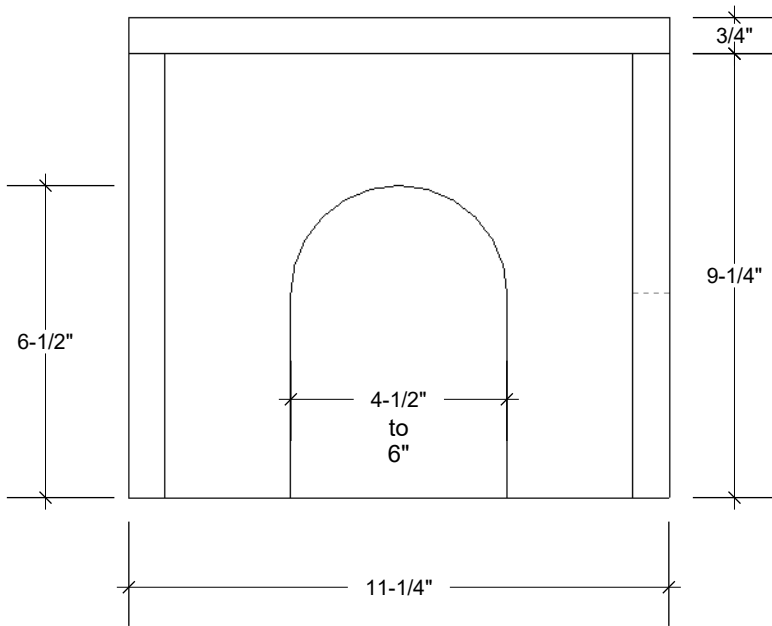


Template for arch could be coffee can or other appropriately sized round object from 4-1/2" to 6" in diameter

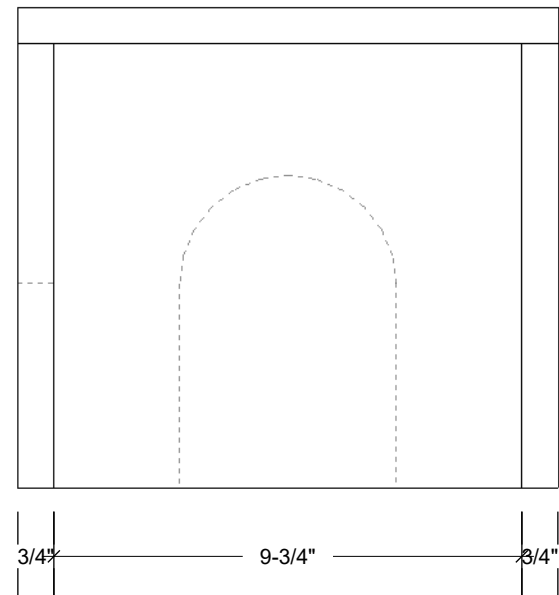
Elevation- Closed Side



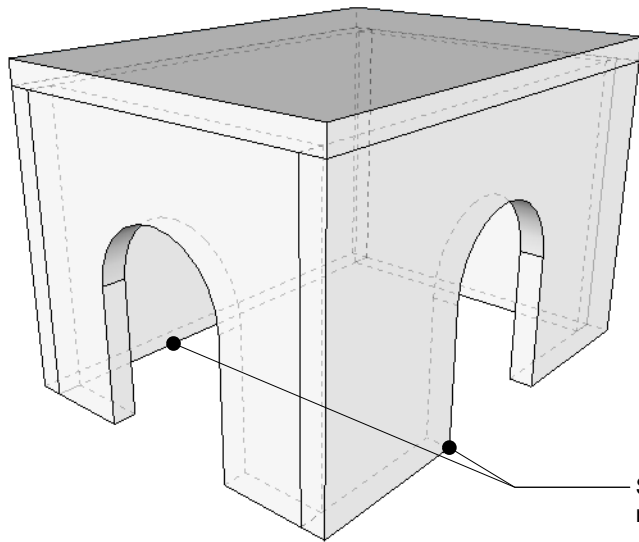
Plan View- Top



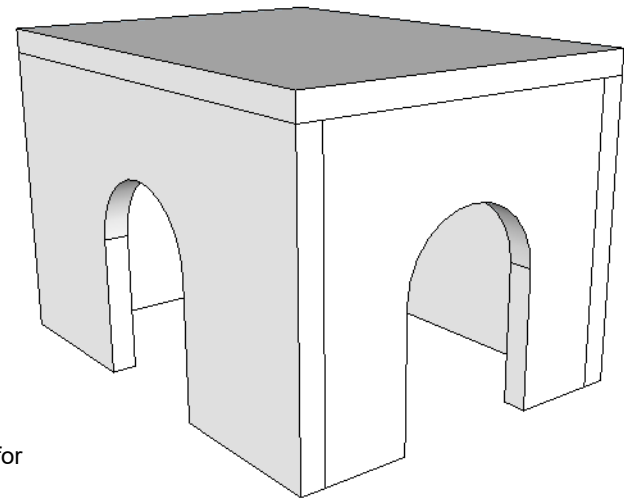
Plan View- Bottom



Perspective- Open End



Perspective- Mirrored Orientation



Sides or Ends could be swapped for mirror orientation of plan